

# Consumer Price Index in the Month of Azar of the Year 1397<sup>1</sup>

## Increase in the Nation's Households Inflation Rate

The general index (base year 1395=100) stood at 151.7 in the month of Azar <sup>2</sup> of the year 1397 indicating a 2.6 percent rise compared to the previous month. In this month, the general index percentage change is 37.4 percent compared to the corresponding month of the previous year, that is to say that if the “**same range of goods and services**” was purchased by the nation's households, on average, 37.4 percent higher than the month of Azar in the year 1396 would be spent. These **goods and services** increased by 2.5 percentage points over the previous month (34.9 percent). The twelve-month inflation rate ending to the month of Azar of the year 1397 reached 18.0 percent which increased by 2.4 percentage point over the same information in the previous month (15.6 percent).

The CPI for the major group of "food, beverages and tobacco" and for the major group of "non-food items and services" increased by 4.8 and 1.6 percent, respectively compared to the previous month. The percentage change of prices in the month of Azar of the year 1397 for these two groups are 53.9 and 30.9 percent compared to the month of Azar in the year 1396, respectively.

## Increase in the Nation's Urban Households Inflation Rate

The general price index for the country's urban households in the month of Azar of the year 1397 stood at 151 showing a 2.5 percent increase compared to the previous month. Percentage change of the general index is **36.9 percent** compared to the corresponding month in the previous year, which rose by 2.4 percentage points over to the previous month (34.5 percent).

---

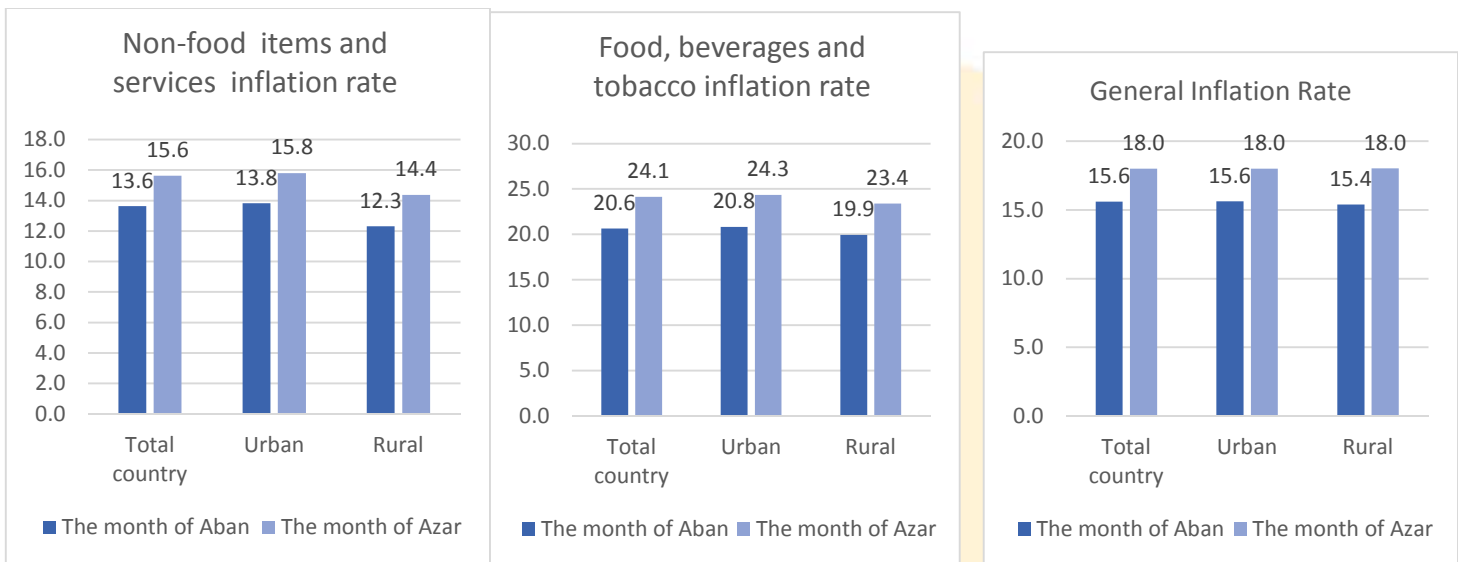
<sup>1</sup>It is the Iranian year which usually begins on the day of 21 March of the Gregorian calendar. To find the corresponding year of the Gregorian calendar, add 621 or 622 (depending on the time of the year) to a [solar Hijri](#) year. For example the corresponding year of the year 1397 in the Gregorian calendar is (21 March 2018-20 March 2019).

## 2 Iranian months and their equivalent in Gregorian calendar

Farvardin (21 March-20 April)	Mehr (23 September-22 October)
Ordibehesht (21 April-21 May)	Aban (23 October-21 November)
Khordad (22 May-21 June)	Azar (22 November-21 December)
Tir (22 June-22 July)	Dey (22 December-20 January)
Mordad (23 July-22 August)	Bahman (21 January-19 February)
Shahrivar (23 August-22 September)	Esfand (20 February-20 March)

## Increase in the Nation's Rural Households Inflation Rate

The general price index for the country's rural households in the month of Azar of the year 1397 stood at 155.3 showing a 3 percent increase compared to the previous month. Percentage change of the general index is **39.9 percent** compared to the corresponding month in the previous year, which rose by 2.6 percentage points over to the previous month (**37.3 percent**).



## Prices Changes in the Current Month

In the current month, all sub-classes of the general index experienced price rises. In the major group of "food, beverages and tobacco", the highest increase of prices belongs to "meat" (fishes, mutton, beef, and chicken) group, "vegetables" (eggplant, bell pepper, Zucchini, onion and tomato) group, "milk, cheese and eggs" (pasteurized milk, pasteurized cream), group, fruit and dried fruits" (raisin, date, pistachio, apple, grape, and water melon) group, "food products not classified elsewhere"(tomato sauce, vinegar, and dried lime) group, and "beverages (coffee)" group. In the major group of "non-food items and services", the highest increase of prices goes to "furnishings, household appliances and routine household maintenance" group, "detergents" group, "cloth and footwear" group and "transportation"(spare parts and different types of automobiles) group compared to the previous month.

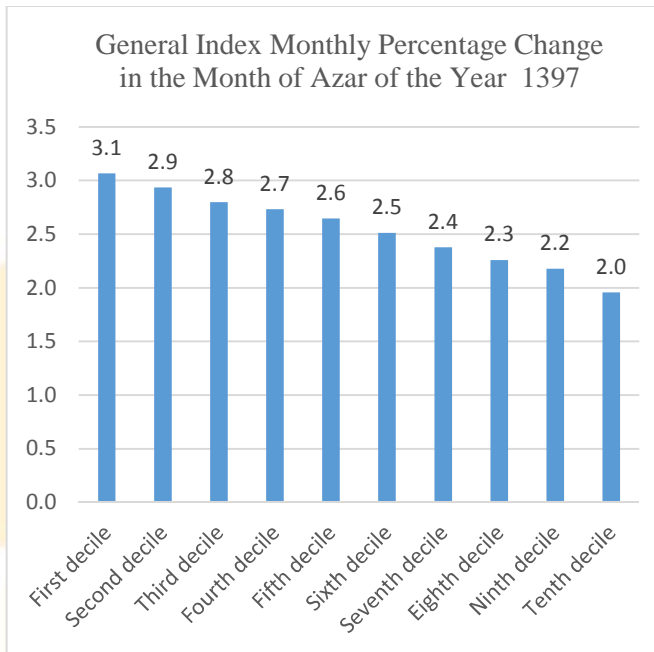
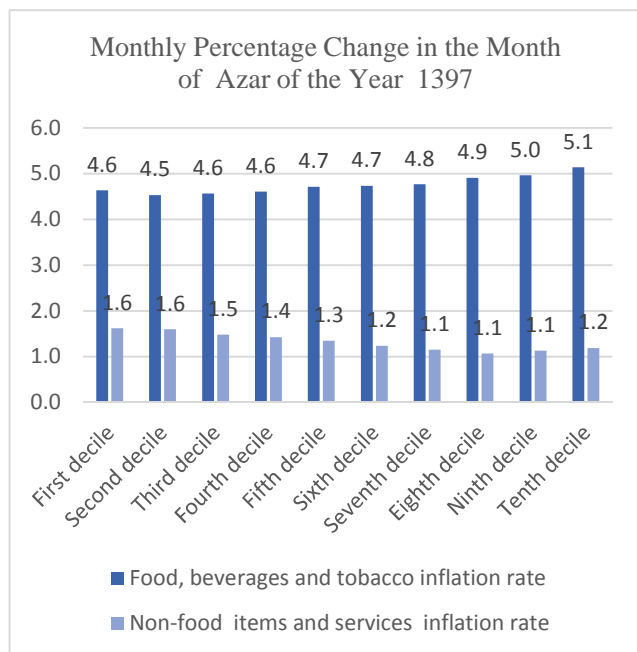
In the major group of "food, beverages and tobacco", the group "tobacco" experienced a fall in comparison with the previous month and in the major group of "non-food items and services", the cell phones, computer accessories, and 18-karat gold experienced a fall in comparison with the previous month.

## Price Index Percentage Change in the Total Country Expenditure Deciles in the Current Month

The range of twelve -month inflation rate ending to the month of Azar of the year 1397 for various deciles is fluctuating between 17.1 percent for the first decile (those with the lowest income ) to 19.5 percent for the tenth decile ( those with the highest decile).



Graphs of the index percentage change for various expenditure deciles in general index and in the major groups of "food, beverages and tobacco" and "non-food items and services" compared to the previous month are shown as follows:



**Table 1. Consumer price index for goods and services of households (CPI)**
**1395=100**

Description	General index		Food, beverages and tobaccos		Non-food items and services	
	Month					
	Aban the year 1397	Azar the year 1397	Aban the year 1397	Azar the year 1397	Aban the year 1397	Azar the year 1397
Total country	<b>147.8</b>	<b>151.7</b>	<b>168.5</b>	<b>176.5</b>	<b>140.1</b>	<b>142.4</b>
Urban	<b>147.3</b>	<b>151.0</b>	<b>168.9</b>	<b>177.2</b>	<b>140.1</b>	<b>142.3</b>
Rural	<b>150.8</b>	<b>155.3</b>	<b>167.0</b>	<b>174.2</b>	<b>140.2</b>	<b>142.9</b>

**Table 2. Monthly percentage change of index (CPI)**

Description	General index		Food, beverages and tobaccos		Non-food items and services	
	Month					
	Aban the year 1397	Azar the year 1397	Aban the year 1397	Azar the year 1397	Aban the year 1397	Azar the year 1397
Total country	<b>2.6</b>	<b>2.6</b>	<b>4.1</b>	<b>4.8</b>	<b>2.0</b>	<b>1.6</b>
Urban	<b>2.6</b>	<b>2.5</b>	<b>4.4</b>	<b>4.9</b>	<b>1.9</b>	<b>1.5</b>
Rural	<b>2.7</b>	<b>3.0</b>	<b>3.0</b>	<b>4.3</b>	<b>2.5</b>	<b>1.9</b>

**Table 3. Percentage change of CPI compared to the corresponding month of the previous year**

Description	General index		Food, beverages and tobaccos		Non-food items and services	
	Month					
	Aban the year 1397	Azar the year 1397	Aban the year 1397	Azar the year 1397	Aban the year 1397	Azar the year 1397
Total country	<b>34.9</b>	<b>37.4</b>	<b>50.3</b>	<b>53.9</b>	<b>29.0</b>	<b>30.9</b>
Urban	<b>34.5</b>	<b>36.9</b>	<b>50.5</b>	<b>54.2</b>	<b>29.0</b>	<b>30.8</b>
Rural	<b>37.3</b>	<b>39.9</b>	<b>49.7</b>	<b>52.7</b>	<b>28.9</b>	<b>31.1</b>

**Table 4. Twelve-month inflation rate of CPI**

Description	General index		Food, beverages and tobaccos		Non-food items and services	
	Month					
	Aban the year 1397	Azar the year 1397	Aban the year 1397	Azar the year 1397	Aban the year 1397	Azar the year 1397
Total country	<b>15.6</b>	<b>18.0</b>	<b>20.6</b>	<b>24.1</b>	<b>13.6</b>	<b>15.6</b>
Urban	<b>15.6</b>	<b>18.0</b>	<b>20.8</b>	<b>24.3</b>	<b>13.8</b>	<b>15.8</b>
Rural	<b>15.4</b>	<b>18.0</b>	<b>19.9</b>	<b>23.4</b>	<b>12.3</b>	<b>14.4</b>

\*. Not elsewhere classified.



Statistical Centre of Iran

**Consumer price index for goods and services of the households in the total country by major sections, some groups and goods classes in the month of Azar, the year 1397**

1395=100

Description	Weight	Index	Percentage changes of CPI		
			Compared to the previous month	Compared to the corresponding month of the previous year	12 months ending to the current month compared to the corresponding month of the previous year
<b>General index</b>	#####	151.7	2.6	37.4	18.0
<b>1. Food and non-alcoholic beverages</b>	26.64	174.5	5.1	51.9	23.1
<b>Food</b>	25.55	174.3	5.2	51.6	22.9
Bread and cereals	6.67	140.5	2.5	29.1	15.0
Meat, white meat and related products	5.91	187.4	7.6	60.0	27.4
Red and poultry meat	5.14	187.3	7.3	57.6	27.5
Fish and seafood	0.77	187.7	10.0	78.4	26.7
Milk, cheese and eggs	2.80	171.9	5.6	52.6	25.7
Oils and fats	1.29	164.9	1.7	47.9	20.9
Fruit and dried fruit	3.43	201.9	4.6	79.4	33.5
Vegetables ( pulses and vegetables)	3.02	197.2	8.6	43.4	18.2
Sugar, jam, honey, chocolate and confectionery ( sugar, sugar lump and confectionery )	1.44	145.4	2.6	36.6	14.6
Food products n.e.c*	0.98	220.6	3.6	105.5	34.3
Tea, coffee, cocoa and fruit juice (non-alcoholic beverages)	1.10	179.8	2.5	60.2	27.5
<b>2. Tobacco</b>	0.59	266.0	-3.3	147.1	71.6
<b>3. Clothing and footwear</b>	4.78	154.5	3.2	44.6	18.3
<b>4. Housing, water, electricity, gas and other fuels</b>	35.50	133.8	1.2	21.7	13.0
Housing	31.12	135.1	1.2	23.9	14.9
Rentals for housing units (service)	30.72	135.1	1.2	23.9	14.9
Services for the maintenance and repair of the dwelling	0.41	135.2	1.6	25.9	13.1
Water, electricity and fuel	4.38	124.6	1.3	6.7	0.2
<b>5. Furnishings, household equipment and routine household maintenance</b>	3.93	178.6	4.7	68.0	25.6
<b>6. Health &amp; medical services</b>	7.14	132.7	1.0	21.5	12.8
<b>7. Transport</b>	9.41	145.2	1.9	37.3	17.0
<b>8. Communication</b>	2.87	142.1	-0.4	36.7	14.9
<b>9. Recreation and culture</b>	1.65	180.3	1.6	65.7	27.9
<b>10. Education</b>	1.86	141.3	0.9	21.6	15.0
<b>11. Restaurants and hotels</b>	1.44	139.6	1.8	29.1	14.0
<b>12. Miscellaneous goods and services</b>	4.18	163.3	0.9	49.4	24.0

Consumer price index for goods and services of the urban households in the total country by major sections, some groups and goods classes in the month of Azar, the year 1397  
1395=100

Description	Weight	Index	Percentage changes of CPI		
			Compared to the previous month	Compared to the corresponding month of the previous year	12 months ending to the current month compared to the corresponding month of the previous year
<b>General index</b>	<b>100.00</b>	<b>151.0</b>	<b>2.5</b>	<b>36.9</b>	<b>18.0</b>
1. Food and non-alcoholic beverages	<b>24.53</b>	<b>175.5</b>	<b>5.2</b>	<b>52.6</b>	<b>23.5</b>
<b>Food</b>	23.57	175.4	5.3	52.3	23.3
Bread and cereals	5.98	140.4	2.6	28.6	14.7
Meat, white meat and related products	5.54	188.3	7.8	60.7	27.7
Red and poultry meat	4.79	188.4	7.4	58.3	27.8
Fish and seafood	0.76	188.1	10.2	78.4	26.8
Milk, cheese and eggs	2.70	173.3	5.6	53.6	26.1
Oils and fats	1.15	163.0	1.7	45.0	20.5
Fruit and dried fruit	3.31	206.5	5.1	82.0	34.8
Vegetables ( pulses and vegetables)	2.70	194.2	7.9	42.6	17.7
Sugar, jam, honey, chocolate and confectionery ( sugar, sugar lump and confectionery)	1.30	146.9	2.8	37.2	15.0
Food products n.e.c*	0.89	221.1	3.8	105.2	34.6
Tea, coffee, cocoa and fruit juice (non-alcoholic beverages)	0.96	178.8	2.6	59.1	27.3
<b>2.Tobacco</b>	<b>0.50</b>	<b>259.2</b>	<b>-3.3</b>	<b>140.4</b>	<b>69.5</b>
<b>3.Clothing and footwear</b>	<b>4.52</b>	<b>153.9</b>	<b>3.2</b>	<b>44.0</b>	<b>18.1</b>
<b>4.Housing, water, electricity, gas and other fuels</b>	<b>38.07</b>	<b>134.6</b>	<b>1.2</b>	<b>22.6</b>	<b>13.5</b>
Housing	34.10	135.7	1.3	24.5	15.1
Rentals for housing units (service)	33.73	135.7	1.2	24.4	15.1
Services for the maintenance and repair of the dwelling	0.37	138.8	1.8	28.8	14.3
Water, electricity and fuel	3.97	125.2	1.1	7.3	0.3
<b>5.Furnishings, household equipment and routine household maintenance</b>	<b>3.64</b>	<b>176.3</b>	<b>4.5</b>	<b>65.9</b>	<b>25.1</b>
<b>6. Health &amp; medical services</b>	<b>7.13</b>	<b>132.9</b>	<b>0.9</b>	<b>21.8</b>	<b>12.9</b>
<b>7.Transport</b>	<b>9.44</b>	<b>146.3</b>	<b>2.0</b>	<b>38.4</b>	<b>17.5</b>
<b>8.Communication</b>	<b>2.85</b>	<b>142.2</b>	<b>-0.3</b>	<b>37.0</b>	<b>15.0</b>
<b>9. Recreation and culture</b>	<b>1.64</b>	<b>180.6</b>	<b>1.6</b>	<b>65.7</b>	<b>28.1</b>
<b>10. Education</b>	<b>2.02</b>	<b>141.0</b>	<b>0.9</b>	<b>21.8</b>	<b>15.0</b>
<b>11. Restaurants and hotels</b>	<b>1.54</b>	<b>139.4</b>	<b>1.8</b>	<b>29.1</b>	<b>14.0</b>
<b>12. Miscellaneous goods and services</b>	<b>4.13</b>	<b>163.4</b>	<b>0.8</b>	<b>49.4</b>	<b>24.3</b>

\*. Not elsewhere classified.

**Consumer price index for goods and services of the rural households in the total country by major sections, some groups and goods classes in the month of Azar , the year 1397** **1395=100**

Description	Weight	Index	Percentage changes of CPI		
			Compared to the previous month	Compared to the corresponding month of the previous year	12 months ending to the current month compared to the corresponding month of the previous year
<b>General index</b>	<b>100.00</b>	<b>155.3</b>	<b>3.0</b>	<b>39.9</b>	<b>18.0</b>
<b>1. Food and non-alcoholic beverages</b>	<b>38.48</b>	<b>171.0</b>	<b>4.7</b>	<b>49.6</b>	<b>21.9</b>
<b>Food</b>	36.60	170.4	4.9	48.9	21.6
Bread and cereals	10.56	140.5	2.5	30.4	15.8
Meat, white meat and related products	7.96	183.6	6.9	57.1	26.1
Red and poultry meat	7.10	183.4	6.7	54.9	26.0
Fish and seafood	0.86	185.3	9.2	78.2	26.4
Milk, cheese and eggs	3.33	165.7	5.2	47.8	24.2
Oils and fats	2.06	170.5	1.8	57.0	22.3
Fruit and dried fruit	4.10	181.5	2.0	67.4	27.5
Vegetables ( pulses and vegetables)	4.82	206.4	10.8	45.7	19.8
Sugar, jam, honey, chocolate and confectionery ( sugar, sugar lump and confectionery )	2.25	140.9	1.7	34.6	13.1
Food products n.e.c*	1.53	219.0	2.9	106.3	33.3
Tea, coffee, cocoa and fruit juice (non-alcoholic beverages)	1.88	182.6	2.1	63.6	27.9
<b>2.Tobacco</b>	<b>1.14</b>	<b>282.7</b>	<b>-3.2</b>	<b>163.6</b>	<b>76.7</b>
<b>3.Clothing and footwear</b>	<b>6.28</b>	<b>156.9</b>	<b>3.1</b>	<b>46.9</b>	<b>19.2</b>
<b>4.Housing, water, electricity, gas and other fuels</b>	<b>21.11</b>	<b>125.7</b>	<b>1.3</b>	<b>12.8</b>	<b>7.6</b>
Housing	14.47	127.1	1.0	16.8	11.4
Rentals for housing units (service)	13.87	127.3	1.0	16.8	11.5
Services for the maintenance and repair of the dwelling	0.60	122.8	0.8	15.9	8.8
Water, electricity and fuel	6.64	122.6	1.9	4.8	-0.3
<b>5.Furnishings, household equipment and routine household maintenance</b>	<b>5.53</b>	<b>186.7</b>	<b>5.1</b>	<b>75.7</b>	<b>27.6</b>
<b>6. Health &amp; medical services</b>	<b>7.19</b>	<b>132.0</b>	<b>1.1</b>	<b>20.0</b>	<b>12.6</b>
<b>7.Transport</b>	<b>9.26</b>	<b>138.8</b>	<b>1.4</b>	<b>31.0</b>	<b>14.1</b>
<b>8.Communication</b>	<b>2.97</b>	<b>141.8</b>	<b>-0.5</b>	<b>35.5</b>	<b>14.5</b>
<b>9. Recreation and culture</b>	<b>1.72</b>	<b>178.8</b>	<b>1.8</b>	<b>65.7</b>	<b>26.8</b>
<b>10. Education</b>	<b>0.95</b>	<b>144.4</b>	<b>0.7</b>	<b>18.9</b>	<b>14.8</b>
<b>11. Restaurants and hotels</b>	<b>0.89</b>	<b>141.4</b>	<b>2.1</b>	<b>29.7</b>	<b>14.1</b>
<b>12. Miscellaneous goods and services</b>	<b>4.48</b>	<b>162.6</b>	<b>1.7</b>	<b>49.4</b>	<b>22.3</b>

\*. Not elsewhere classified.



**Consumer price index for goods and services of the households in the total country and its percentage changes for special groups in the month of Azar, the year 1397**  
1395=100

Description		Weight	Index	Percentage changes of CPI			
				Compared to the previous month	Compared to the corresponding month of the previous year	12 months ending to the current month compared to the corresponding month of the previous year	
<b>General index</b>		100.00	151.7	2.6	37.4	18.0	
General index	Food, beverages and tobacco	27.24	176.5	4.8	53.9	24.1	
	Non-food products and services	72.76	142.4	1.6	30.9	15.6	
General index	Rent	30.72	135.1	1.2	23.9	14.9	
	General index (excluding rent)	69.28	159.0	3.1	43.2	19.4	
<i>General index</i>	Goods	Goods	50.87	167.9	3.9	50.5	21.5
		Durable goods	5.46	193.9	2.2	82.7	35.3
		Non-durable goods	40.33	164.7	4.2	45.9	19.7
		Semi-durable goods	5.08	165.6	3.6	55.0	21.7
	Services	49.13	134.8	1.0	23.5	14.3	
Food products		25.55	174.3	5.2	51.6	22.9	
Food products	Fresh food products	12.60	191.5	6.8	57.9	27.0	
	Miscellaneous food products	12.95	156.4	3.2	44.2	18.3	
General goods and services		8.77	117.3	0.6	6.7	2.1	

Statistical Centre of Iran





Statistical Centre of Iran

**Consumer price index for goods and services of the urban households in the total country and its percentage changes for special groups in the month of Azar, the year 1397**  
1395=100

Description	Weight	Index	Percentage changes of CPI				
			Compared to the previous month	Compared to the corresponding month of the previous year	12 months ending to the current month compared to the corresponding month of the previous year		
General index	100.00	151.0	2.5	36.9	18.0		
General index	Food, beverages and tobacco	25.03	177.2	4.9	54.2	24.3	
	Non-food products and services	74.97	142.3	1.5	30.8	15.8	
General index	Rent	33.73	135.7	1.2	24.4	15.1	
	General index (excluding rent)	66.27	158.8	3.1	43.2	19.4	
General index	Goods	Goods	47.65	168.3	3.9	50.9	21.8
		Durable goods	5.55	193.7	2.1	82.5	35.4
		Non-durable goods	37.32	164.9	4.2	46.1	19.8
		Semi-durable goods	4.79	165.2	3.5	54.5	21.6
		Services	52.35	135.3	1.0	23.9	14.5
Food products		23.57	175.4	5.3	52.3	23.3	
Food products	Fresh food products	12.30	191.9	6.8	58.6	27.4	
	Miscellaneous food products	11.26	157.4	3.4	44.7	18.5	
General goods and services		8.51	117.0	0.5	6.8	2.1	

Statistical Centre of Iran

**Consumer price index for goods and services of the rural households in the total country and its percentage changes for special groups in the month of Azar, the year 1397** 1395=100

Description	Weight	Index	Percentage changes of CPI			
			Compared to the previous month	Compared to the corresponding month of the previous year	12 months ending to the current month compared to the corresponding month of the previous year	
General index	100.00	155.3	3.0	39.9	18.0	
General index	Food, beverages and tobacco	39.62	174.2	4.3	52.7	23.4
	Non-food products and services	60.38	142.9	1.9	31.1	14.4
General index	Rental	13.87	127.3	1.0	16.8	11.5
	General index* (excluding rental)	86.13	159.8	3.2	43.5	19.0
General index	Goods	68.84	166.5	3.8	49.0	20.6
	Durable goods	4.96	195.3	2.4	83.7	35.1
	Non-durable goods	57.03	163.8	4.0	45.3	19.2
	Semi-durable goods	6.85	167.4	3.7	56.9	22.3
	Services	31.16	130.6	0.7	19.4	12.2
Food products		36.60	170.4	4.9	48.9	21.6
Food products	Fresh food products	17.49	189.7	7.0	55.2	25.7
	Miscellaneous food products	19.11	153.2	2.7	42.5	17.7
General goods and services		11.35	118.7	1.1	6.1	1.8

**Table of the information on the general price index for the country's households by the base year: 1395 1395=100**

Period	Index number	Monthly percentage change	Percentage change compared to the corresponding month in the previous year	12-month inflation
Farvardin, the year 1395	96.7	0.6	7.8	10.6
Ordibehesht, the year 1395	96.8	0.1	7.3	10.1
Khordad, the year 1395	97.5	0.7	6.8	9.5
Tir , the year 1395	98.5	1.1	6.6	9.0
Mordadr, the year 1395	99.5	1.0	7.2	8.6
Shahrivar, the year 1395	99.8	0.3	6.8	8.3
Mehr, the year 1395	100.3	0.5	6.6	7.9
Aban, the year 1395	100.6	0.3	6.2	7.6
Azar, the year 1395	101.4	0.8	5.7	7.2
Dey, the year 1395	102.2	0.8	6.2	7.0
Bahman, the year 1395	102.7	0.5	7.1	6.9
Esfand, the year 1395	104.0	1.2	8.2	6.9
Farvardin, the year 1396	105.5	1.4	9.0	7.0
Ordibehesht, the year 1396	105.3	-0.1	8.8	7.1
Khordad, the year 1396	105.5	0.2	8.3	7.2
Tir , the year 1396	106.6	1.0	8.2	7.4
Mordad, the year 1396	107.0	0.4	7.6	7.4
Shahrivar, the year 1396	107.0	0.0	7.2	7.4
Mehr, the year 1396	108.5	1.3	8.1	7.5
Aban, the year 1396	109.6	1.0	8.9	7.8
Azar, the year 1396	110.4	0.7	8.9	8.0
Day, the year 1396	110.9	0.4	8.5	8.2
Bahman, the year 1396	111.2	0.3	8.2	8.3
Esfand, the year 1396	111.4	0.2	7.2	8.2
Farvardin, the year 1397	112.9	1.3	7.0	8.1
Ordibehesht, the year 1397	114.1	1.1	8.3	8.0
Khordad, the year 1397	116.2	1.9	10.2	8.2
Tir , the year 1397	121.4	4.4	13.8	8.7
Mordad, the year 1397	127.7	5.2	19.3	9.7
Shahriva the year, 1397	134.6	5.4	25.7	11.3
Mehr, the year 1397	144.1	7.1	32.8	13.4
Aban, the year 1397	147.8	2.6	34.9	15.6
Azar, The year 1397	151.7	2.6	37.4	18.0

**Table of the information on general price index for urban households by the base year: 1395**

**1395=100**

Period	Index number	Monthly percentage change	Percentage change compared to the corresponding month in the previous year	12-month inflation
Farvardin, the year 1395	96.9	0.7	7.9	10.8
Ordibehesht, the year 1395	97.0	0.1	7.6	10.3
Khordad, the year 1395	97.6	0.6	7.0	9.7
Tir, the year 1395	98.6	1.0	6.7	9.2
Mordadr, the year 1395	99.5	0.9	7.2	8.8
Shahrivar, the year 1395	99.8	0.3	6.6	8.4
Mehr, the year 1395	100.3	0.5	6.4	8.1
Aban, the year 1395	100.6	0.2	5.8	7.6
Azar, the year 1395	101.3	0.7	5.3	7.3
Dey, the year 1395	102.1	0.8	5.9	7.0
Bahman, the year 1395	102.6	0.5	6.8	6.8
Esfand, the year 1395	103.8	1.2	7.9	6.8
Farvardin, the year 1396	105.1	1.3	8.5	6.8
Ordibehesht, the year 1396	105.1	-0.1	8.3	6.9
Khordad, the year 1396	105.3	0.3	7.9	7.0
Tir, the year 1396	106.5	1.1	8.1	7.1
Mordad, the year 1396	106.9	0.4	7.4	7.1
Shahrivar, the year 1396	107.0	0.1	7.1	7.1
Mehr, the year 1396	108.5	1.4	8.1	7.3
Aban, the year 1396	109.5	1.0	8.9	7.5
Azar, the year 1396	110.3	0.7	8.9	7.8
Day, the year 1396	110.8	0.5	8.5	8.1
Bahman, the year 1396	111.2	0.3	8.4	8.2
Esfand, the year 1396	111.4	0.2	7.3	8.1
Farvardin, the year 1397	112.9	1.3	7.3	8.0
Ordibehesht, the year 1397	114.1	1.1	8.6	8.1
Khordad, the year 1397	116.1	1.7	10.2	8.2
Tir, the year 1397	121.5	4.6	14.0	8.8
Mordad, the year 1397	127.6	5.1	19.4	9.8
Shahriva the yearr, 1397	134.4	5.3	25.7	11.4
Mehr, the year 1397	143.6	6.8	32.4	13.4
Aban, the year 1397	147.3	2.6	34.5	15.6
Azar, the year 1397	151.0	2.5	36.9	18.0

Statistical Centre of Iran

**Table of the information on general price index for rural households by the base year: 1395**

**1395=100**

Period	Index number	Monthly percentage change	Percentage change compared to the corresponding month in the previous year	12-month inflation
Farvardin, the year 1395	95.9	0.2	6.8	10.0
Ordibehesht, the year 1395	95.8	-0.1	5.7	9.4
Khordad, the year 1395	96.7	0.9	5.9	8.7
Tir , the year 1395	98.2	1.5	6.2	8.2
Mordadr, the year 1395	99.6	1.4	7.1	7.8
Shahrivar, the year 1395	99.9	0.3	7.1	7.5
Mehr, the year 1395	100.2	0.3	7.4	7.3
Aban, the year 1395	100.6	0.4	7.7	7.2
Azar, the year 1395	101.8	1.2	7.3	7.1
Dey, the year 1395	102.6	0.8	7.5	7.1
Bahman, the year 1395	103.3	0.7	8.3	7.1
Esfand, the year 1395	105.0	1.6	9.7	7.2
Farvardin, the year 1396	107.2	2.1	11.8	7.7
Ordibehesht, the year 1396	106.9	-0.3	11.5	8.1
Khordad, the year 1396	106.5	-0.3	10.1	8.5
Tir , the year 1396	107.3	0.7	9.2	8.7
Mordad, the year 1396	107.8	0.5	8.2	8.8
Shahrivar, the year 1396	107.5	-0.3	7.6	8.9
Mehr, the year 1396	108.5	1.0	8.3	8.9
Aban, the year 1396	109.9	1.2	9.2	9.0
Azar, the year 1396	111.0	1.0	9.0	9.2
Day, the year 1396	111.0	0.0	8.2	9.2
Bahman, the year 1396	111.0	0.0	7.4	9.1
Esfand, the year 1396	111.5	0.4	6.2	8.8
Farvardin, the year 1397	112.9	1.3	5.4	8.3
Ordibehesht, the year 1397	114.0	0.9	6.6	7.9
Khordad, the year 1397	117.1	2.7	9.9	7.9
Tir , the year 1397	120.9	3.2	12.7	8.2
Mordad, the year 1397	128.0	5.9	18.8	9.1
Shahriva the year, 1397	135.5	5.8	26.1	10.7
Mehr, the year 1397	146.8	8.3	35.3	13.0
Aban, the year 1397	150.8	2.7	37.3	15.4
Azar, the year 1397	155.3	3.0	39.9	18.0

### General consumer price index for goods and services of the households in the country 1395=100

Period	The year 1390	The year 1391	The year 1392	The year 1393	The year 1394	The year 1395	The year 1396	The year 1397
<b>Year</b>	42.8	55.3	73.5	84.2	93.6	100.0	108.2	-
Month of Farvardin	38.4	47.9	67.2	78.9	89.8	96.7	105.5	112.9
Month of Ordibehesht	39.5	48.7	67.9	79.4	90.2	96.8	105.3	114.1
Month of Khordad	40.2	49.1	69.9	80.0	91.3	97.5	105.5	116.2
Month of Tir	40.9	51.1	71.5	82.0	92.4	98.5	106.6	121.4
Month of Mordad	41.9	52.3	72.8	83.2	92.8	99.5	107.0	127.7
Month of Shahrivar	42.6	53.4	73.7	83.9	93.5	99.8	107.0	134.6
Month of Mehr	43.3	56.1	74.8	85.0	94.1	100.3	108.5	144.1
Month of Aban	43.7	58.2	75.9	85.7	94.7	100.6	109.6	147.8
Month of Azar	44.4	59.0	76.3	87.5	95.9	101.4	110.4	151.7
Month of Dey	45.0	60.3	77.1	88.1	96.3	102.2	110.9	
Month of Bahman	46.0	63.2	77.2	88.2	95.9	102.7	111.2	
Month of Esfand	47.1	65.0	77.7	88.7	96.1	104.0	111.4	

### Consumer price index for food, beverages and tobacco of the households in the total country 1395=100

Period	The year 1390	The year 1391	The year 1392	The year 1393	The year 1394	The year 1395	The year 1396	The year 1397
<b>Year</b>	37.0	53.8	77.5	84.8	93.1	100.0	112.2	-
Month of Farvardin	32.8	44.7	71.5	82.8	91.0	95.1	111.7	118.5
Month of Ordibehesht	34.0	46.0	71.9	79.6	91.2	94.9	110.3	119.4
Month of Khordad	34.7	46.1	74.1	79.4	91.7	96.5	110.1	124.4
Month of Tir	35.0	49.6	75.9	81.8	92.6	97.6	110.6	128.3
Month of Mordad	35.6	51.0	77.4	83.7	92.9	99.7	110.9	140.0
Month of Shahrivar	36.0	51.5	77.8	84.5	92.7	100.0	109.5	149.0
Month of Mehr	36.7	53.9	78.8	84.7	91.9	99.3	109.7	161.8
Month of Aban	37.3	56.8	79.7	85.5	91.9	99.6	112.1	168.5
Month of Azar	38.3	57.8	79.6	89.4	94.8	101.5	114.7	176.5
Month of Dey	39.1	58.9	81.0	89.0	95.6	102.8	115.1	
Month of Bahman	41.1	63.0	80.7	88.6	95.1	104.3	115.5	
Month of Esfand	43.2	66.9	81.4	89.0	95.2	108.7	115.8	

### Consumer price index for non-food items and services of the households in the total country 1395=100

Period	The year 1390	The year 1391	The year 1392	The year 1393	The year 1394	The year 1395	The year 1396	The year 1397
<b>Year</b>	45.6	56.1	71.5	83.9	93.8	100.0	106.8	-
Month of Farvardin	41.2	49.5	65.0	76.9	89.2	97.3	103.1	110.8
Month of Ordibehesht	42.2	50.0	65.9	79.3	89.8	97.5	103.5	112.1
Month of Khordad	42.9	50.6	67.8	80.3	91.1	97.8	103.8	113.2
Month of Tir	43.9	51.8	69.4	82.0	92.3	98.8	105.1	118.8
Month of Mordad	45.0	52.9	70.6	83.0	92.8	99.5	105.6	123.1
Month of Shahrivar	45.7	54.3	71.7	83.7	93.9	99.8	106.1	129.2
Month of Mehr	46.5	57.2	72.8	85.2	95.2	100.7	108.0	137.4
Month of Aban	46.9	58.8	74.0	85.9	96.0	101.0	108.6	140.1
Month of Azar	47.4	59.6	74.6	86.5	96.5	101.3	108.8	142.4
Month of Dey	47.9	61.0	75.2	87.7	96.6	102.0	109.3	
Month of Bahman	48.4	63.2	75.4	88.0	96.3	102.1	109.5	
Month of Esfand	49.0	64.1	76.0	88.5	96.5	102.2	109.8	

### General consumer price index for goods and services of urban households

1395=100

Period	The year 1381	The year 1382	The year 1383	The year 1384	The year 1385	The year 1386	The year 1387	The year 1388	The year 1389	The year 1390	The year 1391	The year 1392	The year 1393	The year 1394	The year 1395	The year 1396	The year 1397
<b>Year</b>	11.2	12.	14.6	16.4	18.6	21.8	27.4	30.0	34.2	43.2	55.5	73.3	84.2	93.7	100.	108.1	-
Month of Farvardin	10.7	12.	13.7	15.9	17.5	20.3	24.7	29.1	31.6	38.7	48.3	67.0	78.7	89.7	96.9	105.1	112.9
Month of Ordibehesht	10.8	12.	13.8	15.8	17.5	20.2	25.2	29.1	31.8	39.8	49.0	67.6	79.3	90.1	97.0	105.1	114.1
Month of Khordad	10.9	12.	13.9	15.8	17.6	20.4	25.8	29.3	31.9	40.5	49.3	69.7	79.9	91.2	97.6	105.3	116.1
Month of Tir	11.0	12.	14.3	16.0	18.1	21.1	26.4	29.4	32.3	41.4	51.3	71.3	81.9	92.4	98.6	106.5	121.5
Month of Mordad	11.1	12.	14.4	16.0	18.2	21.1	26.9	29.7	32.8	42.4	52.4	72.6	83.2	92.8	99.5	106.9	127.6
Month of Shahrivar	11.1	12.	14.5	16.1	18.4	21.3	27.6	29.8	33.2	43.0	53.6	73.5	83.9	93.6	99.8	107.0	134.4
Month of Mehr	11.2	12.	14.8	16.6	18.8	22.1	28.3	30.0	34.0	43.8	56.3	74.5	85.1	94.3	100.	108.5	143.6
Month of Aban	11.3	13.	14.9	16.7	18.9	22.4	28.6	30.3	34.5	44.3	58.3	75.7	85.7	95.0	100.	109.5	147.3
Month of Azar	11.4	13.	15.0	16.8	19.2	22.7	29.0	30.7	35.2	44.9	59.1	76.1	87.4	96.2	101.	110.3	151.0
Month of Dey	11.5	13.	15.2	16.9	19.6	23.2	28.9	30.7	36.5	45.5	60.4	77.0	88.1	96.4	102.	110.8	
Month of Bahman	11.6	13.	15.3	17.0	19.7	23.4	28.7	30.7	37.8	46.5	63.2	77.1	88.1	96.0	102.	111.2	
Month of Esfand	11.7	13.	15.4	17.1	19.7	23.7	28.8	31.0	38.3	47.5	64.9	77.6	88.6	96.2	103.	111.4	

### Consumer price index for food, beverages and tobacco of urban households

1395=100

Period	The year 1381	The year 1382	The year 1383	The year 1384	The year 1385	The year 1386	The year 1387	The year 1388	The year 1389	The year 1390	The year 1391	The year 1392	The year 1393	The year 1394	The year 1395	The year 1396	The year 1397
<b>Year</b>	7.6	8.8	10.1	11.1	12.6	15.0	19.9	22.5	27.7	36.7	53.5	77.3	84.8	93.0	100.	112.3	-
Month of Farvardin	7.2	8.3	9.5	11.8	11.9	14.3	18.1	21.2	24.9	32.4	44.5	71.5	82.7	91.0	95.2	111.5	118.7
Month of Ordibehesht	7.4	8.3	9.5	11.1	11.8	14.0	18.3	21.0	24.8	33.7	45.8	71.8	79.4	91.0	95.1	110.1	119.7
Month of Khordad	7.4	8.5	9.6	10.9	11.8	14.1	18.7	21.4	24.7	34.4	45.9	74.0	79.3	91.7	96.6	110.2	124.6
Month of Tir	7.5	8.7	9.8	10.7	11.8	14.2	19.0	21.9	25.0	34.7	49.3	75.7	81.9	92.4	97.7	110.8	128.5
Month of Mordad	7.6	8.7	10.0	10.7	11.9	14.3	19.4	22.4	26.2	35.3	50.6	77.3	83.9	92.6	99.7	111.0	140.4
Month of Shahrivar	7.5	8.6	10.1	10.7	12.2	14.5	20.2	22.3	26.4	35.8	51.1	77.5	84.5	92.4	100.	109.7	149.6
Month of Mehr	7.4	8.6	10.2	11.0	12.5	14.8	20.6	22.4	27.4	36.4	53.6	78.6	84.7	91.8	99.2	109.9	161.8
Month of Aban	7.5	8.9	10.2	11.2	12.6	15.3	21.1	23.0	28.2	37.1	56.4	79.5	85.3	92.0	99.4	112.2	168.9
Month of Azar	7.7	9.1	10.4	11.3	13.3	15.8	21.4	23.6	29.9	38.1	57.5	79.4	89.5	94.9	101.	114.9	177.2
Month of Dey	8.0	9.2	10.5	11.4	13.7	16.0	21.0	23.6	31.0	38.9	58.5	80.8	88.8	95.6	102.	115.3	
Month of Bahman	8.1	9.1	10.6	11.4	13.8	16.3	20.5	23.5	31.4	41.0	62.8	80.5	88.4	95.1	104.	115.7	
Month of Esfand	8.1	9.1	10.8	11.5	13.7	16.8	20.4	24.0	32.2	43.1	66.7	81.2	88.9	95.1	108.	115.9	

### Consumer price index for non-food items and services of urban households

1395=100

Period	The year 1381	The year 1382	The year 1383	The year 1384	The year 1385	The year 1386	The year 1387	The year 1388	The year 1389	The year 1390	The year 1391	The year 1392	The year 1393	The year 1394	The year 1395	The year 1396	The year 1397
<b>Year</b>	13.1	14.9	17.0	19.2	21.9	25.4	31.3	33.8	37.2	45.9	56.3	71.6	83.9	94.0	100.	106.7	-
Month of Farvardin	12.6	13.9	16.0	18.1	20.5	23.4	28.1	33.2	34.9	41.4	49.9	65.0	77.0	89.2	97.4	103.0	110.9
Month of Ordibehesht	12.6	14.1	16.1	18.2	20.7	23.5	28.8	33.3	35.2	42.4	50.3	65.9	79.2	89.8	97.6	103.4	112.3
Month of Khordad	12.7	14.2	16.2	18.3	20.7	23.7	29.4	33.3	35.6	43.2	50.8	67.8	80.1	91.1	97.9	103.7	113.2
Month of Tir	12.9	14.6	16.7	18.8	21.6	24.7	30.2	33.3	35.8	44.2	52.1	69.4	81.9	92.3	98.9	105.1	119.1
Month of Mordad	13.0	14.7	16.8	18.9	21.6	24.8	30.8	33.4	36.1	45.4	53.2	70.6	82.9	92.9	99.4	105.5	123.4
Month of Shahrivar	13.0	14.8	16.9	18.9	21.7	24.9	31.4	33.6	36.5	46.2	54.7	71.7	83.6	94.1	99.8	106.0	129.4
Month of Mehr	13.3	15.2	17.3	19.6	22.3	26.1	32.2	33.8	37.1	46.9	57.5	72.8	85.2	95.4	100.	108.0	137.5
Month of Aban	13.3	15.2	17.4	19.6	22.3	26.2	32.5	34.1	37.4	47.3	59.1	74.1	85.9	96.3	101.	108.6	140.1
Month of Azar	13.3	15.2	17.5	19.7	22.4	26.3	32.8	34.2	37.5	47.8	59.8	74.7	86.6	96.7	101.	108.8	142.3
Month of Dey	13.4	15.4	17.6	19.9	22.8	27.0	33.0	34.3	38.9	48.4	61.2	75.4	87.8	96.8	101.	109.3	
Month of Bahman	13.5	15.4	17.7	20.0	22.8	27.1	33.0	34.4	40.7	48.8	63.3	75.6	88.1	96.4	102.	109.7	
Month of Esfand	13.5	15.5	17.8	20.0	22.9	27.4	33.1	34.5	41.1	49.3	64.1	76.1	88.5	96.7	102.	109.9	

### General consumer price index for goods and services of rural households

1395=100

Period	The year 1381	The year 1382	The year 1383	The year 1384	The year 1385	The year 1386	The year 1387	The year 1388	The year 1389	The year 1390	The year 1391	The year 1392	The year 1393	The year 1394	The year 1395	The year 1396	The year 1397
<b>Year</b>	9.4	10.7	12.2	13.6	15.3	18.0	22.8	25.1	30.1	41.1	54.5	74.2	84.3	93.2	100.	108.8	-
Month of Farvardin	8.6	10.1	11.5	13.1	14.4	16.7	20.8	23.9	27.2	37.1	46.6	67.8	79.4	89.8	95.9	107.2	112.9
Month of Ordibehesht	9.0	10.3	11.7	13.3	14.6	16.9	21.3	23.9	27.4	38.2	47.5	68.8	80.0	90.7	95.8	106.9	114.0
Month of Khordad	9.0	10.4	11.8	13.3	14.7	17.0	21.9	24.1	27.4	38.9	48.0	70.7	80.4	91.4	96.7	106.5	117.1
Month of Tir	9.1	10.4	11.8	13.4	14.8	17.2	22.3	24.4	27.6	39.3	50.2	72.5	82.1	92.5	98.2	107.3	120.9
Month of Mordad	9.2	10.5	11.9	13.5	14.9	17.4	22.5	24.7	28.1	40.0	51.4	73.8	83.2	93.0	99.6	107.8	128.0
Month of Shahrivar	9.3	10.7	12.1	13.6	15.1	17.7	23.0	24.8	28.3	40.7	52.2	74.8	84.0	93.3	99.9	107.5	135.5
Month of Mehr	9.4	10.8	12.2	13.7	15.3	18.0	23.2	25.1	28.8	41.3	54.9	75.7	84.6	93.4	100.	108.5	146.8
Month of Aban	9.4	10.9	12.4	13.8	15.6	18.2	23.5	25.4	29.3	41.8	57.2	76.4	85.7	93.4	100.	109.9	150.8
Month of Azar	9.6	11.0	12.5	13.9	15.8	18.6	23.8	25.9	30.3	42.5	58.3	76.7	87.6	94.9	101.	111.0	155.3
Month of Dey	9.7	11.1	12.6	14.0	16.0	18.9	23.7	26.0	34.6	43.1	59.7	77.5	88.1	95.5	102.	111.0	
Month of Bahman	9.8	11.2	12.8	14.1	16.3	19.3	23.5	26.2	35.7	44.4	62.8	77.6	88.3	95.4	103.	111.0	
Month of Esfand	10.0	11.4	12.9	14.3	16.5	19.5	23.6	26.7	36.5	45.6	65.2	78.2	88.8	95.7	105.	111.5	

### Consumer price index for food, beverages and tobacco of rural households

1395=100

Period	The year 1381	The year 1382	The year 1383	The year 1384	The year 1385	The year 1386	The year 1387	The year 1388	The year 1389	The year 1390	The year 1391	The year 1392	The year 1393	The year 1394	The year 1395	The year 1396	The year 1397
<b>Year</b>	6.7	7.6	8.4	9.3	10.8	13.2	17.9	20.1	25.5	37.6	54.4	78.0	84.9	93.2	100.	111.8	-
Month of Farvardin	6.1	7.2	8.1	9.1	9.9	12.3	16.3	18.9	22.5	33.5	45.1	71.7	82.9	90.8	94.9	112.3	117.7
Month of Ordibehesht	6.4	7.3	8.1	9.2	10.0	12.4	16.7	18.9	22.6	35.0	46.4	72.2	80.3	91.7	94.3	110.9	118.3
Month of Khordad	6.4	7.3	8.1	9.2	10.1	12.5	17.2	19.1	22.4	35.6	46.7	74.4	79.6	91.8	95.9	109.9	123.7
Month of Tir	6.5	7.4	8.1	9.1	10.1	12.6	17.5	19.4	22.6	35.9	50.4	76.6	81.7	93.1	97.4	110.0	127.6
Month of Mordad	6.6	7.4	8.1	9.1	10.2	12.7	17.6	19.7	23.4	36.4	51.8	78.0	83.1	93.6	99.8	110.4	138.7
Month of Shahrivar	6.6	7.5	8.3	9.2	10.5	12.9	18.2	19.8	23.5	36.8	52.3	78.5	84.0	93.3	99.9	108.8	147.0
Month of Mehr	6.6	7.5	8.4	9.2	10.7	13.1	18.3	19.9	23.9	37.3	54.5	79.4	84.3	92.1	99.5	108.9	162.1
Month of Aban	6.6	7.6	8.5	9.3	11.0	13.4	18.7	20.3	24.6	37.8	57.3	80.0	85.7	91.6	100.	111.5	167.0
Month of Azar	6.8	7.7	8.6	9.4	11.3	13.7	19.1	21.0	26.1	38.8	58.3	80.2	89.2	94.4	102.	114.1	174.2
Month of Dey	6.9	7.8	8.8	9.5	11.6	14.1	18.7	21.1	30.2	39.6	59.5	81.4	89.4	95.5	103.	114.3	
Month of Bahman	7.1	7.9	8.9	9.6	12.0	14.5	18.4	21.3	31.6	41.2	63.4	81.2	89.2	95.1	104.	114.6	
Month of Esfand	7.1	8.0	9.0	9.7	12.1	14.7	18.5	21.9	32.7	43.0	67.2	81.8	89.4	95.5	108.	115.3	

### Consumer price index for non-food items and services of rural households

1395=100

Period	The year 1381	The year 1382	The year 1383	The year 1384	The year 1385	The year 1386	The year 1387	The year 1388	The year 1389	The year 1390	The year 1391	The year 1392	The year 1393	The year 1394	The year 1395	The year 1396	The year 1397
<b>Year</b>	12.8	14.7	17.0	19.2	21.1	23.8	28.5	31.0	35.1	43.8	54.6	71.3	83.9	93.3	100.0	106.9	-
Month of Farvardin	11.8	13.7	15.9	18.2	20.3	22.2	26.2	29.8	32.4	40.0	47.9	64.7	76.6	89.0	96.6	103.8	109.8
Month of Ordibehesht	12.2	14.0	16.2	18.4	20.5	22.4	26.8	29.9	32.8	40.7	48.4	66.1	79.8	89.9	96.9	104.2	111.1
Month of Khordad	12.3	14.2	16.4	18.6	20.6	22.7	27.5	30.1	33.0	41.5	49.1	67.7	81.0	91.1	97.3	104.3	112.7
Month of Tir	12.5	14.4	16.6	18.8	20.8	23.1	28.1	30.3	33.3	42.0	50.2	69.2	82.5	92.0	98.7	105.5	116.5
Month of Mordad	12.6	14.5	16.7	19.1	20.9	23.4	28.4	30.5	33.5	42.8	51.0	70.5	83.2	92.6	99.5	106.1	121.1
Month of Shahrivar	12.7	14.7	16.9	19.2	21.1	23.7	28.6	30.8	33.7	43.8	52.2	71.8	83.9	93.2	100.0	106.7	127.9
Month of Mehr	12.9	14.9	17.1	19.4	21.2	24.0	28.9	31.1	34.2	44.5	55.3	72.8	84.9	94.3	100.7	108.3	136.8
Month of Aban	13.0	15.0	17.3	19.5	21.3	24.3	29.1	31.4	34.5	45.0	57.1	73.7	85.7	94.8	101.0	108.7	140.2
Month of Azar	13.1	15.1	17.4	19.6	21.4	24.6	29.4	31.7	34.7	45.5	58.4	74.0	86.3	95.3	101.7	109.0	142.9
Month of Dey	13.2	15.3	17.6	19.8	21.6	24.9	29.5	31.8	39.1	45.9	59.8	74.4	87.2	95.5	102.4	108.9	
Month of Bahman	13.3	15.4	17.7	19.9	21.7	25.3	29.6	31.9	39.5	46.8	62.4	74.7	87.7	95.7	102.6	108.7	
Month of Esfand	13.5	15.7	17.9	20.1	21.9	25.5	29.7	32.2	40.0	47.5	63.7	75.4	88.2	95.9	102.5	109.0	



**Annual and monthly percentage change of consumer price index for goods and services of the households in the total country** **1395=100**

Period	The year 1390	The year 1391	The year 1392	The year 1393	The year 1394	The year 1395	The year 1396	The year 1397
<b>Year</b>	-	29.5	32.8	14.6	11.1	6.9	8.2	-
Month of Farvardin	-	1.9	3.4	1.4	1.2	0.6	1.4	1.3
Month of Ordibehesht	2.8	1.5	1.1	0.7	0.5	0.1	-0.1	1.1
Month of Khordad	1.8	0.9	2.9	0.7	1.1	0.7	0.2	1.9
Month of Tir	1.8	4.0	2.4	2.4	1.2	1.1	1.0	4.4
Month of Mordad	2.2	2.3	1.8	1.6	0.5	1.0	0.4	5.2
Month of Shahrivar	1.6	2.1	1.2	0.8	0.8	0.3	0.0	5.4
Month of Mehr	1.7	5.1	1.4	1.3	0.6	0.5	1.3	7.1
Month of Aban	1.1	3.7	1.5	0.9	0.6	0.3	1.0	2.6
Month of Azar	1.5	1.5	0.5	2.0	1.3	0.8	0.7	2.6
Month of Dey	1.4	2.2	1.1	0.7	0.3	0.8	0.4	
Month of Bahman	2.2	4.7	0.1	0.1	-0.3	0.5	0.3	
Month of Esfand	2.3	2.9	0.8	0.6	0.2	1.2	0.2	

**Annual and monthly percentage change of consumer price index for food, beverages and tobacco of the households in the total country** **1395=100**

Period	The year 1390	The year 1391	The year 1392	The year 1393	The year 1394	The year 1395	The year 1396	The year 1397
<b>Year</b>	-	45.5	44.0	9.5	9.7	7.5	12.2	-
Month of Farvardin	-	3.5	6.9	1.8	2.2	-0.1	2.7	2.3
Month of Ordibehesht	3.8	2.8	0.6	-3.8	0.2	-0.2	-1.2	0.8
Month of Khordad	1.9	0.3	3.0	-0.3	0.6	1.6	-0.2	4.2
Month of Tir	0.8	7.6	2.4	3.0	1.0	1.2	0.5	3.2
Month of Mordad	1.7	2.7	2.0	2.3	0.3	2.1	0.3	9.1
Month of Shahrivar	1.3	1.0	0.5	0.9	-0.2	0.3	-1.3	6.4
Month of Mehr	1.8	4.8	1.3	0.2	-0.9	-0.7	0.2	8.6
Month of Aban	1.7	5.3	1.1	1.0	0.1	0.3	2.2	4.1
Month of Azar	2.7	1.8	-0.1	4.6	3.1	2.0	2.4	4.8
Month of Dey	2.2	1.9	1.8	-0.5	0.9	1.3	0.3	
Month of Bahman	5.0	7.0	-0.4	-0.5	-0.5	1.5	0.3	
Month of Esfand	5.1	6.2	0.8	0.5	0.1	4.2	0.2	

**Annual and monthly percentage change of consumer price index for non-food items and services of the households in the total country** **1395=100**

Period	The year 1390	The year 1391	The year 1392	The year 1393	The year 1394	The year 1395	The year 1396	The year 1397
<b>Year</b>	-	23.1	27.6	17.3	11.8	6.6	6.8	-
Month of Farvardin	-	1.2	1.5	1.3	0.8	0.8	0.9	0.9
Month of Ordibehesht	2.4	0.9	1.4	3.1	0.7	0.2	0.3	1.2
Month of Khordad	1.7	1.1	2.9	1.2	1.4	0.3	0.3	0.9
Month of Tir	2.2	2.4	2.3	2.2	1.3	1.0	1.3	4.9
Month of Mordad	2.4	2.1	1.7	1.2	0.6	0.6	0.4	3.6
Month of Shahrivar	1.8	2.7	1.6	0.8	1.2	0.3	0.5	5.0
Month of Mehr	1.6	5.3	1.5	1.8	1.4	0.9	1.8	6.4
Month of Aban	0.9	2.9	1.7	0.8	0.9	0.2	0.6	2.0
Month of Azar	1.0	1.3	0.8	0.8	0.4	0.3	0.1	1.6
Month of Dey	1.1	2.3	0.8	1.4	0.1	0.6	0.4	
Month of Bahman	1.1	3.6	0.3	0.3	-0.3	0.1	0.2	

### Annual and monthly percentage change of consumer price index for goods and services of urban households

1395=100

Period	The year 1381	The year 1382	The year 1383	The year 1384	The year 1385	The year 1386	The year 1387	The year 1388	The year 1389	The year 1390	The year 1391	The year 1392	The year 1393	The year 1394	The year 1395	The year 1396	The year 1397
<b>Year</b>	-	13.9	14.6	12.1	13.7	17.2	25.5	9.5	13.9	26.4	28.6	32.1	14.8	11.3	6.8	8.1	-
Month of Farvardin	-	3.0	3.4	3.7	2.6	2.6	4.0	1.2	1.8	0.8	1.7	3.2	1.4	1.2	0.7	1.3	1.3
Month of Ordibehesht	0.9	0.4	0.6	-1.2	0.3	-0.1	2.2	-0.1	0.5	2.9	1.4	1.0	0.7	0.5	0.1	-0.1	1.1
Month of Khordad	0.5	1.5	0.7	0.0	0.3	0.9	2.3	0.6	0.6	1.8	0.8	3.0	0.8	1.2	0.6	0.3	1.7
Month of Tir	1.7	2.7	2.7	1.4	3.0	3.2	2.3	0.6	1.0	2.1	3.9	2.3	2.5	1.2	1.0	1.1	4.6
Month of Mordad	0.4	0.5	0.9	0.3	0.5	0.3	1.9	1.0	1.8	2.4	2.3	1.8	1.6	0.5	0.9	0.4	5.1
Month of Shahrivar	0.1	-0.1	0.7	0.3	0.9	0.7	2.7	0.3	1.1	1.6	2.2	1.2	0.8	0.9	0.3	0.1	5.3
Month of Mehr	1.2	2.2	2.1	3.0	2.6	4.1	2.3	0.6	2.2	1.7	5.1	1.4	1.4	0.8	0.5	1.4	6.8
Month of Aban	0.4	1.0	0.5	0.7	0.5	1.3	1.4	1.2	1.5	1.1	3.5	1.6	0.8	0.7	0.2	1.0	2.6
Month of Azar	1.0	0.7	0.6	0.6	1.6	1.1	1.1	1.2	2.2	1.4	1.4	0.5	2.0	1.2	0.7	0.7	2.5
Month of Dey	1.3	1.1	1.2	1.0	1.9	2.2	-0.2	0.2	3.8	1.4	2.2	1.2	0.8	0.3	0.8	0.5	
Month of Bahman	0.8	-0.2	0.4	0.4	0.5	0.9	-0.5	0.0	3.5	2.0	4.6	0.1	0.0	-0.4	0.5	0.3	
Month of Esfand	0.3	0.4	0.8	0.3	0.2	1.5	0.1	1.0	1.4	2.1	2.7	0.7	0.6	0.2	1.2	0.2	

### Annual and monthly percentage change of consumer price index for food, beverages and tobacco of urban households

1395=100

Period	The year 1381	The year 1382	The year 1383	The year 1384	The year 1385	The year 1386	The year 1387	The year 1388	The year 1389	The year 1390	The year 1391	The year 1392	The year 1393	The year 1394	The year 1395	The year 1396	The year 1397
<b>Year</b>	-	15.0	15.0	10.4	12.9	19.6	32.3	13.2	22.9	32.7	45.8	44.4	9.7	9.7	7.6	12.3	-
Month of Farvardin	-	2.5	4.0	9.4	3.3	3.9	7.3	3.6	4.0	0.7	3.3	7.1	1.9	2.4	0.1	2.6	2.4
Month of Ordibehesht	2.4	-0.7	0.0	-6.1	-0.8	-1.9	1.5	-0.7	-0.6	3.9	2.8	0.5	-4.1	0.0	-	-1.2	0.8
Month of Khordad	0.3	2.7	0.6	-1.7	0.1	0.8	2.1	1.8	-0.6	2.1	0.2	3.0	0.0	0.7	1.6	0.0	4.1
Month of Tir	1.0	2.0	2.3	-1.4	0.3	0.7	1.6	2.2	1.5	0.8	7.5	2.2	3.2	0.8	1.0	0.6	3.2
Month of Mordad	0.9	0.6	2.2	0.0	0.7	0.1	1.8	2.4	4.6	1.8	2.6	2.1	2.5	0.2	2.0	0.2	9.3
Month of Shahrivar	-0.7	-1.7	0.5	0.1	2.9	1.4	4.3	-0.5	0.9	1.4	0.9	0.4	0.7	-0.2	0.4	-1.2	6.5
Month of Mehr	-0.9	0.6	1.0	2.2	1.9	2.7	2.0	0.6	3.6	1.8	4.9	1.3	0.2	-0.7	-	0.2	8.1
Month of Aban	1.4	3.2	0.9	1.8	1.3	3.2	2.4	2.4	3.1	1.8	5.3	1.2	0.7	0.3	0.2	2.1	4.4
Month of Azar	2.4	2.3	1.3	0.9	5.4	2.9	1.4	2.7	5.9	2.7	1.9	-0.2	4.9	3.1	2.0	2.4	4.9
Month of Dey	2.9	0.6	1.6	1.6	2.7	1.6	-1.8	0.2	3.8	2.2	1.8	1.9	-0.7	0.8	1.3	0.4	
Month of Bahman	1.9	-1.1	0.4	0.1	1.1	2.1	-2.3	-0.8	1.3	5.2	7.3	-0.5	-0.5	-0.6	1.5	0.4	
Month of Esfand	0.5	0.5	1.7	0.2	-0.4	3.1	-0.4	2.2	2.4	5.2	6.3	0.9	0.6	0.0	4.2	0.1	

### Annual and monthly percentage change of consumer price index for non-food items and services of urban households

1395=100

Period	The year 1381	The year 1382	The year 1383	The year 1384	The year 1385	The year 1386	The year 1387	The year 1388	The year 1389	The year 1390	The year 1391	The year 1392	The year 1393	The year 1394	The year 1395	The year 1396	The year 1397
<b>Year</b>	-	13.5	14.5	12.7	14.0	16.4	23.0	8.0	10.2	23.4	22.6	27.1	17.2	12.0	6.4	6.7	-
Month of Farvardin	-	3.2	3.2	1.5	2.3	2.1	2.7	0.3	0.9	0.7	1.1	1.5	1.2	0.7	0.8	0.9	1.0
Month of Ordibehesht	0.4	0.8	0.8	0.8	0.7	0.6	2.4	0.1	0.9	2.6	0.9	1.3	2.9	0.6	0.2	0.3	1.2
Month of Khordad	0.6	1.0	0.7	0.7	0.3	0.9	2.3	0.1	1.1	1.7	1.0	3.0	1.1	1.4	0.3	0.3	0.9
Month of Tir	2.0	2.9	2.9	2.4	4.0	4.2	2.6	-0.1	0.8	2.5	2.5	2.4	2.2	1.4	1.0	1.3	5.2
Month of Mordad	0.2	0.4	0.3	0.5	0.4	0.4	1.9	0.4	0.6	2.6	2.2	1.7	1.3	0.6	0.6	0.4	3.6
Month of Shahrivar	0.4	0.5	0.8	0.3	0.2	0.4	2.1	0.6	1.3	1.7	2.7	1.6	0.8	1.3	0.3	0.5	4.9
Month of Mehr	2.0	2.8	2.5	3.3	2.8	4.6	2.5	0.7	1.6	1.6	5.2	1.5	1.9	1.4	1.0	1.8	6.3
Month of Aban	0.1	0.2	0.4	0.3	0.2	0.6	1.0	0.7	0.8	0.9	2.8	1.8	0.8	0.9	0.2	0.6	1.9
Month of Azar	0.6	0.2	0.4	0.5	0.3	0.4	1.0	0.6	0.4	1.0	1.2	0.9	0.8	0.4	0.3	0.1	1.5
Month of Dey	0.7	1.3	1.1	0.8	1.6	2.5	0.5	0.1	3.7	1.1	2.3	0.9	1.4	0.0	0.6	0.5	
Month of Bahman	0.4	0.1	0.5	0.5	0.2	0.4	0.2	0.3	4.6	0.9	3.5	0.3	0.3	-0.3	0.1	0.3	
Month of Esfand	0.2	0.3	0.4	0.4	0.4	0.9	0.3	0.4	0.9	1.0	1.2	0.7	0.6	0.2	0.1	0.2	

**Annual and monthly percentage change of consumer price index for goods and services of rural households**
**1395=100**

Period	The year 1381	The year 1382	The year 1383	The year 1384	The year 1385	The year 1386	The year 1387	The year 1388	The year 1389	The year 1390	The year 1391	The year 1392	The year 1393	The year 1394	The year 1395	The year 1396	The year 1397
<b>Year</b>	16.4	14.6	13.6	12.0	12.4	17.1	26.7	10.3	20.0	36.5	32.7	36.1	13.7	10.6	7.2	8.8	-
Month of Farvardin	3.9	1.5	1.3	1.2	1.1	1.1	6.6	1.3	1.9	1.7	2.4	3.9	1.5	1.2	0.2	2.1	1.3
Month of Ordibehesht	3.9	1.5	1.3	1.2	1.1	1.1	2.3	0.2	0.8	2.9	1.9	1.5	0.8	0.9	-0.1	-0.3	0.9
Month of Khordad	1.0	0.9	0.6	0.5	0.7	1.2	2.9	0.8	0.0	1.8	1.1	2.7	0.4	0.8	0.9	-0.3	2.7
Month of Tir	1.0	0.9	0.6	0.5	0.7	1.2	1.7	1.0	0.8	1.1	4.6	2.6	2.2	1.2	1.5	0.7	3.2
Month of Mordad	1.0	0.9	0.6	0.5	0.7	1.2	1.0	1.2	1.9	1.7	2.3	1.8	1.3	0.6	1.4	0.5	5.9
Month of Shahrivar	0.8	1.0	1.3	0.8	1.5	1.5	2.1	0.6	0.8	1.7	1.7	1.3	0.9	0.3	0.3	-0.3	5.8
Month of Mehr	0.8	1.0	1.3	0.8	1.5	1.5	0.8	0.9	1.6	1.5	5.1	1.3	0.8	0.1	0.3	1.0	8.3
Month of Aban	0.8	1.0	1.3	0.8	1.5	1.5	1.4	1.3	1.8	1.2	4.2	1.0	1.2	0.1	0.4	1.2	2.7
Month of Azar	1.3	1.0	1.1	0.8	1.5	1.9	1.5	2.1	3.5	1.7	1.9	0.4	2.2	1.6	1.2	1.0	3.0
Month of Dey	1.3	1.0	1.1	0.8	1.5	1.9	-0.7	0.4	14.2	1.4	2.3	1.0	0.6	0.6	0.8	0.0	
Month of Bahman	1.3	1.0	1.1	0.8	1.5	1.9	-0.6	0.7	3.0	2.8	5.3	0.1	0.2	-0.1	0.7	0.0	
Month of Esfand	1.5	1.3	1.2	1.1	1.1	1.1	0.3	1.7	2.4	2.7	3.8	0.9	0.5	0.3	1.6	0.4	

**Annual and monthly percentage change of consumer price index for food, beverages and tobacco of rural households**
**1395=100**

Period	The year 1381	The year 1382	The year 1383	The year 1384	The year 1385	The year 1386	The year 1387	The year 1388	The year 1389	The year 1390	The year 1391	The year 1392	The year 1393	The year 1394	The year 1395	The year 1396	The year 1397
<b>Year</b>	17.4	13.6	11.4	10.5	16.0	22.5	35.6	12.1	27.0	47.2	44.8	43.3	8.9	9.8	7.3	11.8	-
Month of Farvardin	4.4	1.2	0.8	1.1	1.4	1.2	11.3	2.3	3.0	2.3	4.7	6.8	1.3	1.5	-0.6	3.1	2.1
Month of Ordibehesht	4.4	1.2	0.8	1.1	1.4	1.2	2.4	0.0	0.5	4.5	3.0	0.7	-3.2	0.9	-0.6	-1.3	0.5
Month of Khordad	0.9	0.4	0.1	-0.5	0.6	0.8	3.2	1.2	-0.9	1.6	0.7	3.1	-0.9	0.1	1.7	-0.9	4.6
Month of Tir	0.9	0.4	0.1	-0.5	0.6	0.8	1.3	1.4	0.9	1.0	7.8	3.0	2.6	1.4	1.6	0.1	3.1
Month of Mordad	0.9	0.4	0.1	-0.5	0.6	0.8	0.9	1.5	3.2	1.4	2.9	1.8	1.8	0.6	2.4	0.3	8.7
Month of Shahrivar	0.4	1.0	1.5	0.8	2.6	1.7	3.3	0.6	0.8	1.1	0.9	0.7	1.1	-0.3	0.1	-1.5	6.0
Month of Mehr	0.4	1.0	1.5	0.8	2.6	1.7	0.5	0.6	1.6	1.3	4.2	1.1	0.4	-1.3	-0.4	0.1	10.2
Month of Aban	0.4	1.0	1.5	0.8	2.6	1.7	2.2	1.8	2.7	1.4	5.2	0.7	1.6	-0.6	0.6	2.4	3.0
Month of Azar	2.1	1.3	1.6	1.0	2.8	2.7	2.1	3.5	6.3	2.5	1.7	0.3	4.1	3.0	2.0	2.3	4.3
Month of Dey	2.1	1.3	1.6	1.0	2.8	2.7	-2.0	0.4	15.6	2.0	2.1	1.5	0.2	1.2	1.0	0.2	
Month of Bahman	2.1	1.3	1.6	1.0	2.8	2.7	-1.5	1.0	4.6	4.1	6.5	-0.3	-0.2	-0.5	1.4	0.2	
Month of Esfand	1.2	0.8	1.1	1.4	1.2	1.2	0.2	2.8	3.6	4.4	6.0	0.8	0.3	0.4	4.3	0.6	

**Annual and monthly percentage change of consumer price index for non-food items and services of rural households**
**1395=100**

Period	The year 1381	The year 1382	The year 1383	The year 1384	The year 1385	The year 1386	The year 1387	The year 1388	The year 1389	The year 1390	The year 1391	The year 1392	The year 1393	The year 1394	The year 1395	The year 1396	The year 1397
<b>Year</b>	15.6	15.5	15.3	13.1	9.8	13.0	19.5	8.7	13.3	25.0	24.6	30.5	17.8	11.2	7.2	6.9	-
Month of Farvardin	3.5	1.8	1.7	1.2	0.9	1.1	2.6	0.3	0.7	0.1	0.8	1.6	1.6	0.9	0.7	1.3	0.7
Month of	3.5	1.8	1.7	1.2	0.9	1.1	2.3	0.3	1.1	1.8	1.1	2.2	4.2	1.0	0.3	0.4	1.2
Month of Khordad	1.0	1.3	1.0	1.2	0.7	1.4	2.6	0.5	0.9	1.9	1.4	2.4	1.5	1.4	0.5	0.1	1.5
Month of Tir	1.0	1.3	1.0	1.2	0.7	1.4	2.0	0.6	0.8	1.2	2.2	2.2	1.9	1.0	1.5	1.1	3.3
Month of Mordad	1.0	1.3	1.0	1.2	0.7	1.4	1.1	0.9	0.6	2.0	1.7	1.9	0.9	0.6	0.8	0.6	3.9
Month of Shahrivar	1.1	1.1	1.2	0.8	0.6	1.3	1.0	0.7	0.8	2.1	2.3	1.8	0.8	0.7	0.5	0.6	5.7
Month of Mehr	1.1	1.1	1.2	0.8	0.6	1.3	1.1	1.3	1.5	1.6	5.8	1.4	1.2	1.2	0.7	1.5	6.9
Month of Aban	1.1	1.1	1.2	0.8	0.6	1.3	0.6	0.8	0.8	1.1	3.4	1.2	0.9	0.5	0.3	0.4	2.5
Month of Azar	0.6	0.8	0.8	0.7	0.6	1.3	0.9	0.8	0.6	1.2	2.1	0.5	0.8	0.5	0.7	0.2	1.9
Month of Dey	0.6	0.8	0.8	0.7	0.6	1.3	0.4	0.5	12.6	1.0	2.4	0.5	1.0	0.2	0.7	-0.1	
Month of Bahman	0.6	0.8	0.8	0.7	0.6	1.3	0.3	0.4	1.2	1.9	4.5	0.4	0.6	0.2	0.2	-0.2	
Month of Esfand	1.8	1.7	1.2	0.9	1.1	1.1	0.5	0.7	1.1	1.5	2.0	0.9	0.7	0.3	-0.1	0.3	

**Contact information:**

For more information on time series of CPI, time series of CPI of expenditure deciles in the country, please visit:

[www.amar.org.ir](http://www.amar.org.ir)

**Address:**

Statistical Centre of Iran, No.211, Dr Fatemi Ave, The corner of Raei Moayeri Street, Postal code: 1414663111

Telfax: +98 2188958189

Email: [int@sci.org.ir](mailto:int@sci.org.ir)



Statistical Centre of Iran